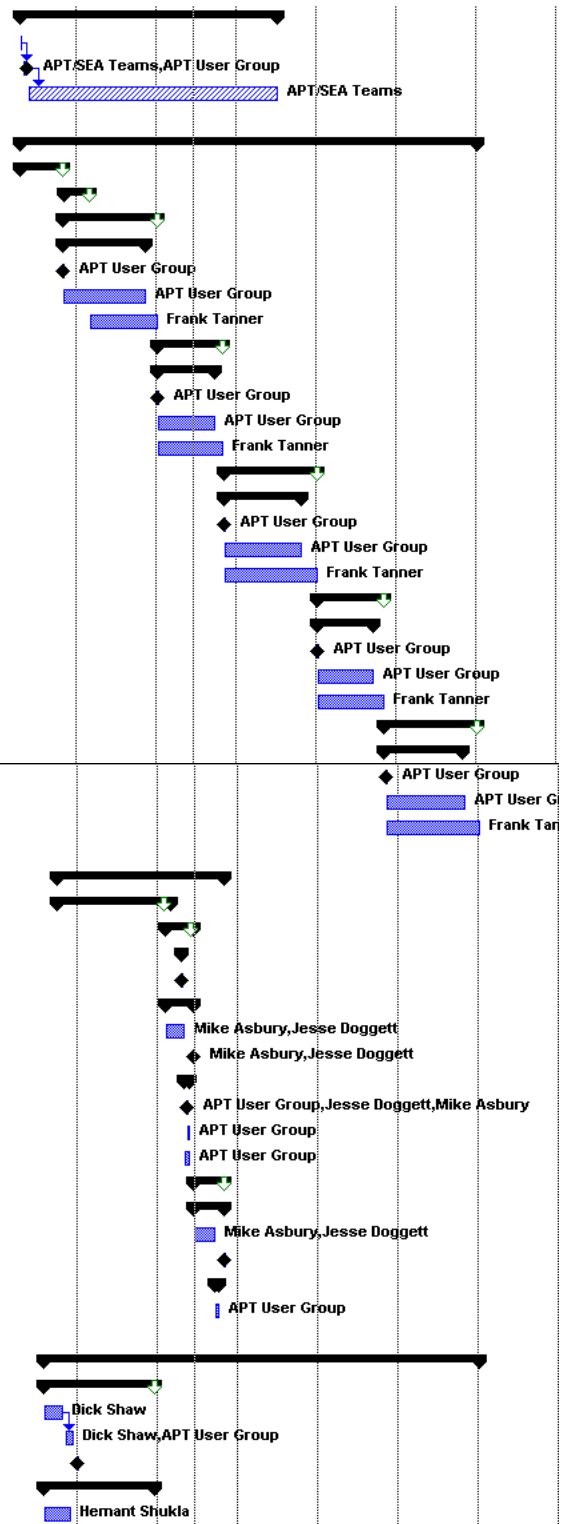
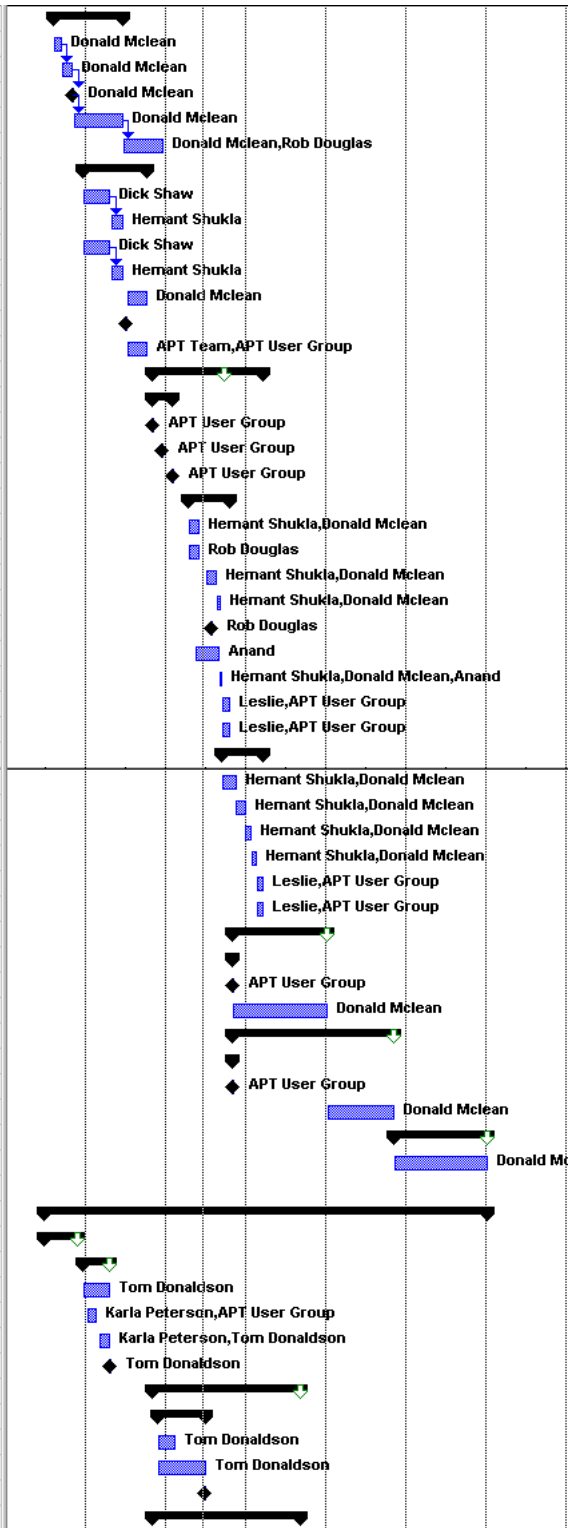


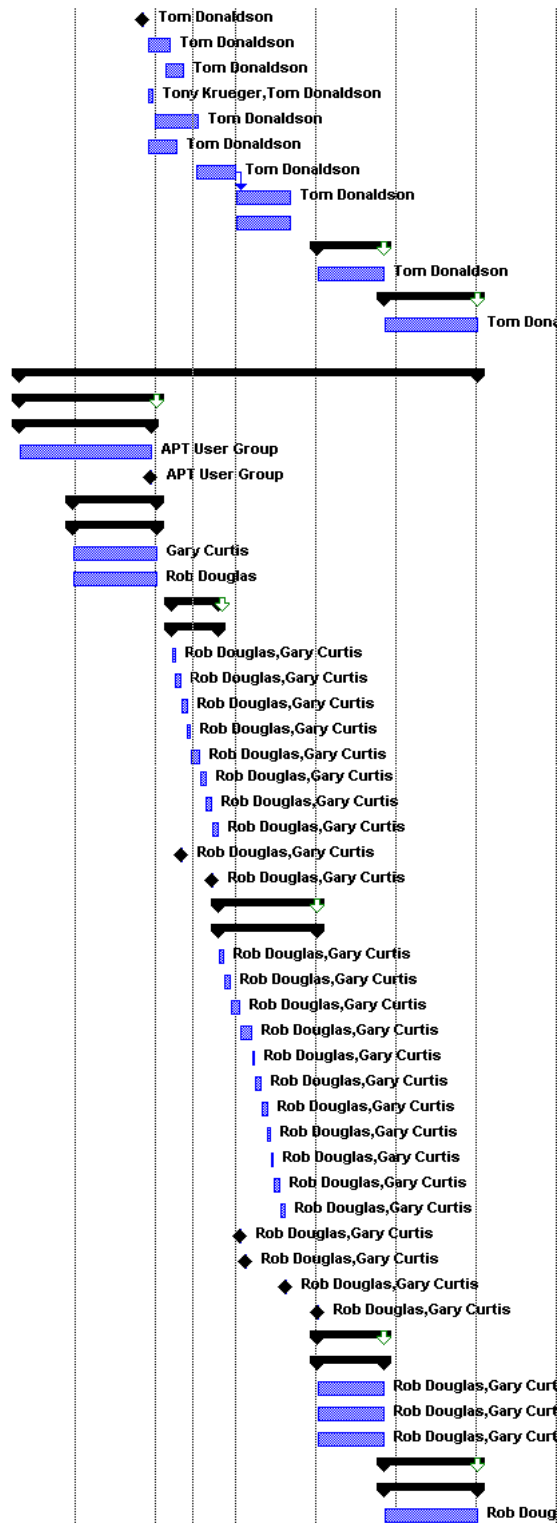
[-] <b>APT/SEA Collaboration</b>	417 days	Fri 2/25/00	Mon 10/1/01	
SEA Prototype Evaluation	1 day	Fri 2/25/00	Fri 2/25/00	
Collaborative Agreement	6 days	Wed 3/1/00	Wed 3/8/00	
Collaborative Support	406 days	Mon 3/13/00	Mon 10/1/01	
[-] <b>APT Visual Target Tuner Tool</b>	745 days	Fri 2/25/00	Thu 1/2/03	
[-] External Rel Cycle 10 Phase 1 -> Rel	70 days	Fri 2/25/00	Thu 6/1/00	
[-] External Rel Cycle 10 Phase 1-> Rel	41 days	Mon 6/5/00	Mon 7/31/00	
[-] External Rel Cycle 10 Phase 2	154 days	Thu 6/1/00	Tue 1/2/01	
[-] Requirements	135 days	Thu 6/1/00	Wed 12/6/00	
Tasks Prioritized	1 day	Thu 6/1/00	Thu 6/1/00	
Requirements Definition	135 days	Thu 6/1/00	Wed 12/6/00	
Software Development	111 days	Tue 8/1/00	Tue 1/2/01	
[-] External Rel Cycle 11 Phase 1	109 days	Tue 1/2/01	Fri 6/1/01	
[-] Requirements	94 days	Tue 1/2/01	Fri 5/11/01	
Tasks Prioritized	1 day	Tue 1/2/01	Tue 1/2/01	
Requirements Definition	94 days	Tue 1/2/01	Fri 5/11/01	
Software Development	109 days	Tue 1/2/01	Fri 6/1/01	
[-] External Rel Cycle 11 Phase 2	153 days	Mon 6/4/01	Wed 1/2/02	
[-] Requirements	127 days	Mon 6/4/01	Tue 11/27/01	
Tasks Prioritized	1 day	Mon 6/4/01	Mon 6/4/01	
Requirements Definition	127 days	Mon 6/4/01	Tue 11/27/01	
Software Development	153 days	Mon 6/4/01	Wed 1/2/02	
[-] External Rel Cycle 12 Phase 1	109 days	Wed 1/2/02	Mon 6/3/02	
[-] Requirements	91 days	Wed 1/2/02	Wed 5/8/02	
Tasks Prioritized	1 day	Wed 1/2/02	Wed 1/2/02	
Requirements Definition	91 days	Wed 1/2/02	Wed 5/8/02	
Software Development	108 days	Thu 1/3/02	Mon 6/3/02	
[-] External Rel Cycle 12 Phase 2	154 days	Mon 6/3/02	Thu 1/2/03	
[-] Requirements	128 days	Tue 6/4/02	Thu 11/28/02	
Tasks Prioritized	1 day	Tue 6/4/02	Tue 6/4/02	
Requirements Definition	128 days	Tue 6/4/02	Thu 11/28/02	
Software Development	154 days	Mon 6/3/02	Thu 1/2/03	
Task Name (Name)	Tasks Prioritized	1 day	Tue 6/4/02	Tue 6/4/02
<a href="#">Help on Name</a>	Requirements Definition	128 days	Tue 6/4/02	Thu 11/28/02
	Software Development	154 days	Mon 6/3/02	Thu 1/2/03
[-] <b>APT Bright Object Checking Tool</b>	275 days	Mon 5/15/00	Fri 6/1/01	
[-] External Rel Cycle 10 Phase 2	187 days	Mon 5/15/00	Tue 1/30/01	
[-] Internal Rel Cycle 10 Phase 2	46 days	Fri 1/19/01	Fri 3/23/01	
[-] Requirements	1 day	Fri 2/23/01	Fri 2/23/01	
Deliver GUI Mock-ups to Req Tex	1 day	Fri 2/23/01	Fri 2/23/01	
[-] Software Development	46 days	Fri 1/19/01	Fri 3/23/01	
Batch Processing	29 days	Fri 1/19/01	Wed 2/28/01	
Instrument Scientist External Rel	1 day	Fri 3/23/01	Fri 3/23/01	
[-] Testing and Documentation	10 days	Thu 3/1/01	Wed 3/14/01	
Complete Documentation	1 day	Tue 3/6/01	Tue 3/6/01	
Usability Testing	6 days	Wed 3/7/01	Wed 3/14/01	
Instrument Scientist Testing	10 days	Thu 3/1/01	Wed 3/14/01	
[-] External Rel Cycle 11 Phase 1	51 days	Fri 3/23/01	Fri 6/1/01	
[-] Software Development	51 days	Fri 3/23/01	Fri 6/1/01	
Development	33 days	Fri 3/23/01	Tue 5/8/01	
PI External Release	1 day	Fri 6/1/01	Fri 6/1/01	
[-] Testing and Documentation	8 days	Wed 5/9/01	Fri 5/18/01	
Independent Testing	8 days	Wed 5/9/01	Fri 5/18/01	
[-] <b>APT Exposure Time Calculator Tool</b>	709 days	Mon 4/17/00	Thu 1/2/03	
[-] ACS External Rel Cycle 10 Phase 2	180 days	Mon 4/17/00	Fri 12/22/00	
ACS CGI Testing	31 days	Mon 4/17/00	Mon 5/29/00	
Requirements Clarification	12.5 days	Fri 6/2/00	Tue 6/20/00	
2nd Instrument Decision	1 day	Fri 6/30/00	Fri 6/30/00	
[-] Software Development	180 days	Mon 4/17/00	Fri 12/22/00	
Synphot Communication	45 days	Mon 4/17/00	Fri 6/16/00	



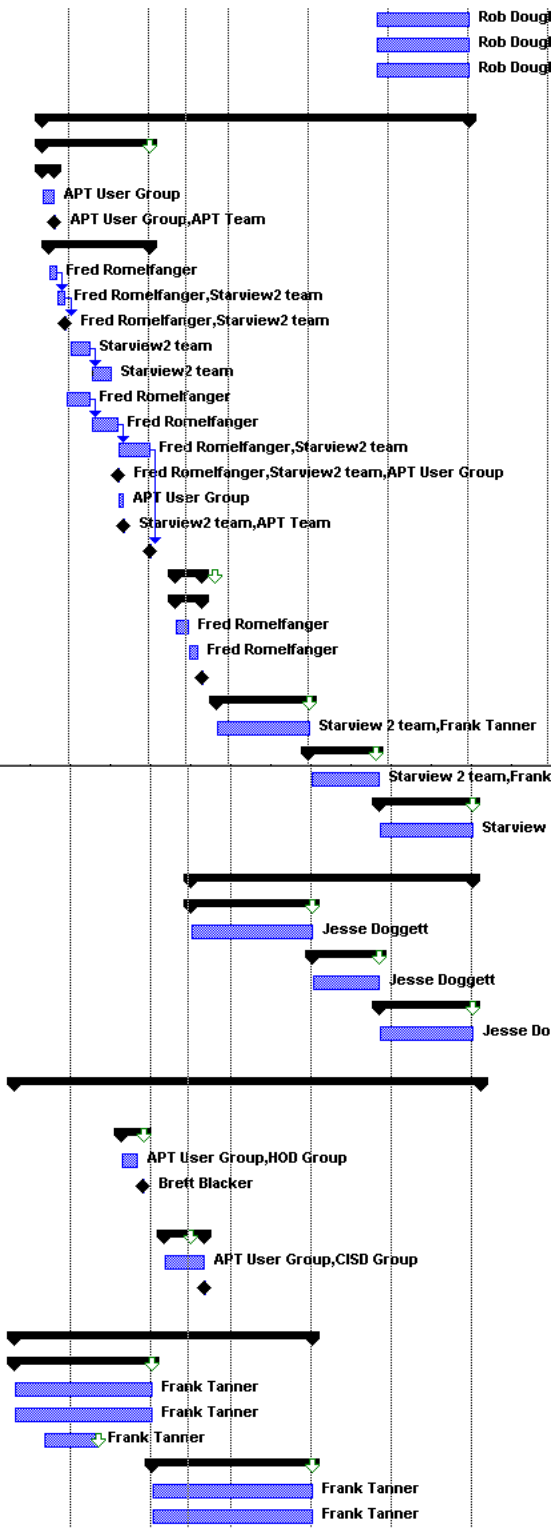
Update ETC GUI & DM for OCI	113 days	Wed 4/19/00	Fri 9/22/00
Understand DM & GUI	13 days	Wed 4/19/00	Fri 5/5/00
Re-Engineer Design	19 days	Mon 5/8/00	Thu 6/1/00
Critical Design Review	1 day	Fri 6/2/00	Fri 6/2/00
Implementation/Test	80 days	Mon 6/5/00	Fri 9/22/00
Integrate OCM /ETC & Testing	65 days	Mon 9/25/00	Fri 12/22/00
ACS ETC Enhancements	105 days	Mon 6/26/00	Fri 11/17/00
Spectral Emission Line - NOGUI	45 days	Mon 6/26/00	Fri 8/25/00
Spectral Emission Line - GUI	20 days	Mon 8/28/00	Fri 9/22/00
Spectroscopic Cap - NOGUI	45 days	Mon 6/26/00	Fri 8/25/00
Spectroscopic Cap - GUI	20 days	Mon 8/28/00	Fri 9/22/00
Additional Enhancements	35 days	Mon 10/2/00	Fri 11/17/00
Risk Management Decision OCM	1 day	Fri 9/29/00	Fri 9/29/00
Evaluation of ETC capabilities	35 days	Mon 10/2/00	Fri 11/17/00
ACS-CORON/STIS/NICMOS External F	180 days	Thu 11/30/00	Wed 8/8/01
Requirements	33 days	Thu 11/30/00	Mon 1/15/01
ACS-CORON Complete	1 day	Thu 11/30/00	Thu 11/30/00
NICMOS Complete	1 day	Wed 12/20/00	Wed 12/20/00
STIS Complete	1 day	Mon 1/15/01	Mon 1/15/01
ACS Software Development	70 days	Mon 2/19/01	Fri 5/25/01
ETC OCM Integration	20 days	Mon 2/19/01	Fri 3/16/01
Adding Mode support to OCM	20 days	Mon 2/19/01	Fri 3/16/01
ETC GUI Changes	18 days	Mon 4/2/01	Wed 4/25/01
ACS Ramp Filters Added to ETC	7 days	Thu 4/26/01	Fri 5/4/01
Add Wavelength to OCM	1 day	Thu 4/12/01	Thu 4/12/01
ACS Coron Spatial Distrib Work	39 days	Wed 3/7/01	Mon 4/30/01
Integrate Spatial Distrib Work	6 days	Mon 4/30/01	Mon 5/7/01
ACS Acceptance Testing	15 days	Mon 5/7/01	Fri 5/25/01
ACS Documentation Update	15 days	Mon 5/7/01	Fri 5/25/01
NICMOS Software Development	68 days	Mon 5/7/01	Wed 8/8/01
Incorporate CGI capabilities into	25 days	Mon 5/7/01	Fri 6/8/01
New Imaging Capabilities	16 days	Fri 6/8/01	Fri 6/29/01
New Coronagraph Capabilities	11 days	Fri 6/29/01	Fri 7/13/01
New Spectroscopic Capabilities	9 days	Fri 7/13/01	Wed 7/25/01
NICMOS Acceptance Testing	11 days	Wed 7/25/01	Wed 8/8/01
NICMOS Documentation Update	11 days	Wed 7/25/01	Wed 8/8/01
COS External Rel Cycle 11 Phase 2	154 days	Fri 6/1/01	Wed 1/2/02
Requirements	1 day	Fri 6/1/01	Fri 6/1/01
COS Requirements Complete	1 day	Fri 6/1/01	Fri 6/1/01
Software Development	154 days	Fri 6/1/01	Wed 1/2/02
WF3 External Rel Cycle 12 Phase 1	262 days	Fri 6/1/01	Mon 6/3/02
Requirements	1 day	Fri 6/1/01	Fri 6/1/01
WF3 Requirements Complete	1 day	Fri 6/1/01	Fri 6/1/01
Software Development	108 days	Thu 1/3/02	Mon 6/3/02
External Rel Cycle 12 Phase 2	153 days	Tue 6/4/02	Thu 1/2/03
Software Development	153 days	Tue 6/4/02	Thu 1/2/03
APT Orbit Planner Tool	722 days	Wed 3/29/00	Thu 1/2/03
Quick-Trans Study (Phase A)	55 days	Wed 3/29/00	Tue 6/13/00
Quick-Trans Prototype (Phase B)	45 days	Mon 6/26/00	Fri 8/25/00
Software Development	45 days	Mon 6/26/00	Fri 8/25/00
Use Cases and Test Scenarios	16 days	Mon 7/3/00	Mon 7/24/00
Performance & Accuracy Analysis	20 days	Mon 7/31/00	Fri 8/25/00
Present Results	1 day	Fri 8/25/00	Fri 8/25/00
External Rel Cycle 11 Phase 2	242 days	Thu 11/30/00	Fri 11/2/01
Requirements	80 days	Mon 12/11/00	Fri 3/30/01
Coordinate APT/TransVerse Req	30 days	Mon 12/11/00	Fri 1/19/01
Requirements Analysis	80 days	Mon 12/11/00	Fri 3/30/01
Requirements Review	1 day	Fri 3/30/01	Fri 3/30/01
Software Development	242 days	Thu 11/30/00	Fri 11/2/01



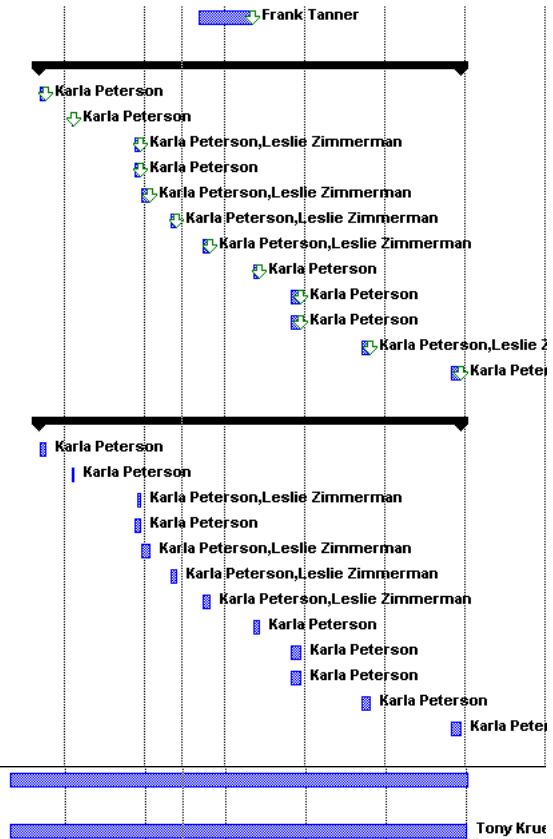
Corba/Socket Study Complete	1 day	Thu 11/30/00	Thu 11/30/00
Communication Interface Develo	40 days	Mon 12/11/00	Fri 2/2/01
Communication Interface Testing	30 days	Mon 1/22/01	Fri 3/2/01
Buy Lisp for Windows	10 days	Mon 12/11/00	Fri 12/22/00
Evaluate Lisp on a PC	74 days	Tue 12/26/00	Fri 4/6/01
Evaluate Existing Orbit Planner P	50 days	Mon 12/11/00	Fri 2/16/01
Initial GUI development	65 days	Mon 4/2/01	Fri 6/29/01
GUI Rework	90 days	Mon 7/2/01	Fri 11/2/01
TransVerse Rework	90 days	Mon 7/2/01	Fri 11/2/01
<b>External Rel Cycle 12 Phase 1</b>	<b>109 days</b>	<b>Wed 1/2/02</b>	<b>Mon 6/3/02</b>
Software Development	109 days	Wed 1/2/02	Mon 6/3/02
<b>External Rel Cycle 12 Phase 2</b>	<b>154 days</b>	<b>Mon 6/3/02</b>	<b>Thu 1/2/03</b>
Software Development	154 days	Mon 6/3/02	Thu 1/2/03
<b>APT Infrastructure and GUI Re-Enginee</b>	<b>745 days</b>	<b>Fri 2/25/00</b>	<b>Thu 1/2/03</b>
<b>External Rel Cycle 10 Phase 2</b>	<b>223 days</b>	<b>Fri 2/25/00</b>	<b>Tue 1/2/01</b>
<b>Requirements</b>	<b>213 days</b>	<b>Fri 2/25/00</b>	<b>Tue 12/19/00</b>
Top Level GUI Req Definition	213 days	Fri 2/25/00	Tue 12/19/00
Top Level GUI Req Presentation	1 day	Tue 12/19/00	Tue 12/19/00
<b>Software Development</b>	<b>137 days</b>	<b>Mon 6/26/00</b>	<b>Tue 1/2/01</b>
<b>Observatory Constraint Man</b>	<b>137 days</b>	<b>Mon 6/26/00</b>	<b>Tue 1/2/01</b>
Phase 2 Table Reader	137 days	Mon 6/26/00	Tue 1/2/01
Engine Development & Unit	137 days	Mon 6/26/00	Tue 1/2/01
<b>External Rel Cycle 11 Phase 1</b>	<b>76 days</b>	<b>Mon 2/5/01</b>	<b>Mon 5/21/01</b>
<b>Software Development</b>	<b>76 days</b>	<b>Mon 2/5/01</b>	<b>Mon 5/21/01</b>
Data Model Changes	6 days	Mon 2/5/01	Mon 2/12/01
Data Model Extensions	11 days	Mon 2/12/01	Mon 2/26/01
XML Read/Write	11 days	Mon 2/26/01	Mon 3/12/01
Top Level APT View GUI	6 days	Mon 3/12/01	Mon 3/19/01
APT Controller	16 days	Mon 3/19/01	Mon 4/9/01
Editor Framework	11 days	Mon 4/9/01	Mon 4/23/01
Plug-in Architecture	11 days	Mon 4/23/01	Mon 5/7/01
Default Actions	11 days	Mon 5/7/01	Mon 5/21/01
Data Model Design Review	1 day	Mon 2/26/01	Mon 2/26/01
Top Level Design Review	1 day	Mon 5/7/01	Mon 5/7/01
<b>External Rel Cycle 11 Phase 2</b>	<b>163 days</b>	<b>Mon 5/21/01</b>	<b>Wed 1/2/02</b>
<b>Software Development</b>	<b>163 days</b>	<b>Mon 5/21/01</b>	<b>Wed 1/2/02</b>
Display Data Model - Hierarchial	11 days	Mon 5/21/01	Mon 6/4/01
Create/Delete - Hierarchial Editor	11 days	Mon 6/4/01	Mon 6/18/01
Drag/Drop - Hierarchial Editor	16 days	Mon 6/18/01	Mon 7/9/01
Generic Editor	21 days	Mon 7/9/01	Mon 8/6/01
Extend OCM	6 days	Mon 8/6/01	Mon 8/13/01
Fixed Target Editor	11 days	Mon 8/13/01	Mon 8/27/01
Moving Target Editor	11 days	Mon 8/27/01	Mon 9/10/01
Text Editor	6 days	Mon 9/10/01	Mon 9/17/01
General Info Editor	6 days	Mon 9/17/01	Mon 9/24/01
Address Editor	11 days	Mon 9/24/01	Mon 10/8/01
RPS2 Format Support	11 days	Mon 10/8/01	Mon 10/22/01
First Developer Release	1 day	Mon 7/9/01	Mon 7/9/01
Generic Editor Design Review	1 day	Mon 7/23/01	Mon 7/23/01
First Full Release	1 day	Mon 10/22/01	Mon 10/22/01
Operational Release	1 day	Wed 1/2/02	Wed 1/2/02
<b>External Rel Cycle 12 Phase 1</b>	<b>109 days</b>	<b>Wed 1/2/02</b>	<b>Mon 6/3/02</b>
<b>Software Development</b>	<b>109 days</b>	<b>Wed 1/2/02</b>	<b>Mon 6/3/02</b>
APT Batch Mode Support	109 days	Wed 1/2/02	Mon 6/3/02
Phase 2 Output Reports	109 days	Wed 1/2/02	Mon 6/3/02
Extend Architecture & Data Mod	109 days	Wed 1/2/02	Mon 6/3/02
<b>External Rel Cycle 12 Phase 2</b>	<b>153 days</b>	<b>Tue 6/4/02</b>	<b>Thu 1/2/03</b>
<b>Software Development</b>	<b>153 days</b>	<b>Tue 6/4/02</b>	<b>Thu 1/2/03</b>
Submission Tool	153 days	Tue 6/4/02	Thu 1/2/03



Phase 2 Output Reports	153 days	Tue 6/4/02	Thu 1/2/03
APT Batch Mode Support	153 days	Tue 6/4/02	Thu 1/2/03
Extend Architecture & Data Mod	153 days	Tue 6/4/02	Thu 1/2/03
[-] APT Archival Research Tool	#####	Mon 5/1/00	Thu 1/2/03
[-] External Rel Cycle 10 Phase 2	177 days	Mon 5/1/00	Tue 1/2/01
[-] Requirements	21 days	Mon 5/1/00	Mon 5/29/00
Concept of Operations & Requir	21 days	Mon 5/1/00	Mon 5/29/00
Requirements Review	1 day	Mon 5/29/00	Mon 5/29/00
[-] Software Development	167 days	Mon 5/15/00	Tue 1/2/01
Developer Spin-Up	15 days	Mon 5/15/00	Fri 6/2/00
Design SV2/VTT Interface	14 days	Mon 6/5/00	Thu 6/22/00
Interface Design Review	1 day	Fri 6/23/00	Fri 6/23/00
Implement SV2 Interface	35 days	Mon 7/3/00	Fri 8/18/00
SV2 Bookkeeping Changes	35 days	Mon 8/21/00	Fri 10/6/00
Implement VTT Interface	40 days	Mon 6/26/00	Fri 8/18/00
VTT GUI/Architecture Changes	45 days	Mon 8/21/00	Fri 10/20/00
SV2/VTT Enhancements	51 days	Mon 10/23/00	Mon 1/1/01
Internal Release	0.67 days	Mon 10/23/00	Mon 10/23/00
Evaluation of Software Prototyp	10 days	Mon 10/23/00	Fri 11/3/00
External Release Decision	1 day	Fri 11/3/00	Fri 11/3/00
External Release	1 day	Tue 1/2/01	Tue 1/2/01
[-] External Rel Cycle 11 Phase 1	43 days?	Thu 3/1/01	Mon 4/30/01
[-] Software Development	43 days?	Thu 3/1/01	Mon 4/30/01
Exit Enhancements	22 days?	Thu 3/1/01	Fri 3/30/01
VTT/SV2 communication enhanc	15 days?	Mon 4/2/01	Fri 4/20/01
External Release	1 day	Mon 4/30/01	Mon 4/30/01
[-] External Rel Cycle 11 Phase 2	153 days	Mon 6/4/01	Wed 1/2/02
Software Development	153 days	Mon 6/4/01	Wed 1/2/02
[-] External Rel Cycle 12 Phase 1	110 days	Tue 1/1/02	Mon 6/3/02
Software Development	110 days	Tue 1/1/02	Mon 6/3/02
[-] External Rel Cycle 12 Phase 2	154 days	Mon 6/3/02	Thu 1/2/03
Software Development	154 days	Mon 6/3/02	Thu 1/2/03
[-] APT Visit Planner Tool	459 days	Mon 4/2/01	Thu 1/2/03
[-] External Rel Cycle 11 Phase 2	198 days	Mon 4/2/01	Wed 1/2/02
Software Development	198 days	Mon 4/2/01	Wed 1/2/02
[-] External Rel Cycle 12 Phase 1	108 days	Thu 1/3/02	Mon 6/3/02
Software Development	108 days	Thu 1/3/02	Mon 6/3/02
[-] External Rel Cycle 12 Phase 2	154 days	Mon 6/3/02	Thu 1/2/03
Software Development	154 days	Mon 6/3/02	Thu 1/2/03
[+] APT Stakeholder Support	757 days	Fri 2/25/00	Mon 1/20/03
[-] APT Phase 1 Support	37.5 days	Mon 10/23/00	Wed 12/13/00
APT Phase 1 Study	28.5 days	Mon 10/23/00	Thu 11/30/00
APT Phase 1 Presentation	1 day	Wed 12/13/00	Wed 12/13/00
[-] APT Help Study	64 days?	Wed 1/31/01	Mon 4/30/01
APT Help Study	64 days?	Wed 1/31/01	Mon 4/30/01
APT Help Presentation	1 day?	Mon 4/30/01	Mon 4/30/01
[-] RPS2	484 days	Fri 2/25/00	Wed 1/2/02
[-] External Rel Cycle 10 Phase 2	223 days	Fri 2/25/00	Tue 1/2/01
Integrated Schedule Support	223 days	Fri 2/25/00	Tue 1/2/01
Maintenance & Enhancements	223 days	Fri 2/25/00	Tue 1/2/01
External Rel Cycle 11 Phase 1	90 days	Mon 5/1/00	Fri 9/1/00
[-] External Rel Cycle 11 Phase 2	262 days	Tue 1/2/01	Wed 1/2/02
Integrated Schedule Support	262 days	Tue 1/2/01	Wed 1/2/02
Maintenance & Enhancements	262 days	Tue 1/2/01	Wed 1/2/02



External Rel Cycle 12 Phase 1	90 days	Tue 5/1/01	Mon 9/3/01
<b>APT &amp; RPS2 Integration Testing</b>	<b>686 days</b>	<b>Thu 5/4/00</b>	<b>Thu 12/19/02</b>
APT External Rel Cycle 10 Phase 1 - Rel	12 days	Thu 5/4/00	Fri 5/19/00
APT External Rel Cycle 10 Phase 1 - Rel	5 days	Mon 7/17/00	Fri 7/21/00
APT External Rel Cycle 10 Phase 2 - Rel	11 days	Wed 12/6/00	Wed 12/20/00
RPS2 External Rel Cycle 10 Phase 2	11 days	Wed 12/6/00	Wed 12/20/00
APT External Rel Cycle 10 Phase 2 - Rel	14 days	Fri 12/22/00	Wed 1/10/01
APT Internal Rel Cycle 10 Phase 2	11 days	Mon 2/26/01	Mon 3/12/01
APT External Rel Cycle 11 Phase 1	13 days	Fri 5/11/01	Tue 5/29/01
RPS2 External Rel ACS version	11 days	Mon 9/3/01	Mon 9/17/01
APT External Rel Cycle 11 Phase 2	17 days	Tue 11/27/01	Wed 12/19/01
RPS2 External Rel Cycle 11 Phase 2	17 days	Tue 11/27/01	Wed 12/19/01
APT External Rel Cycle 12 Phase 1	16 days	Wed 5/8/02	Wed 5/29/02
APT External Rel Cycle 12 Phase 2	16 days	Thu 11/28/02	Thu 12/19/02
<b>APT &amp; RPS2 Release Documentation</b>	<b>686 days</b>	<b>Thu 5/4/00</b>	<b>Thu 12/19/02</b>
APT External Rel Cycle 10 Phase 1 - Rel	12 days	Thu 5/4/00	Fri 5/19/00
APT External Rel Cycle 10 Phase 1 - Rel	5 days	Mon 7/17/00	Fri 7/21/00
APT External Rel Cycle 10 Phase 2 - Rel	5.5 days	Wed 12/13/00	Wed 12/20/00
RPS2 External Rel Cycle 10 Phase 2	11 days	Wed 12/6/00	Wed 12/20/00
APT External Rel Cycle 10 Phase 2 - Rel	14 days	Fri 12/22/00	Wed 1/10/01
APT Internal Rel Cycle 10 Phase 2	11 days	Mon 2/26/01	Mon 3/12/01
APT External Rel Cycle 11 Phase 1	13 days	Fri 5/11/01	Tue 5/29/01
RPS2 External Rel ACS version	11 days	Mon 9/3/01	Mon 9/17/01
APT External Rel Cycle 11 Phase 2	17 days	Tue 11/27/01	Wed 12/19/01
RPS2 External Rel Cycle 11 Phase 2	17 days	Tue 11/27/01	Wed 12/19/01
APT External Rel Cycle 12 Phase 1	16 days	Wed 5/8/02	Wed 5/29/02
APT External Rel Cycle 12 Phase 2	16 days	Thu 11/28/02	Thu 12/19/02
APT & RPS2 Operational User Support	745 days	Fri 2/25/00	Thu 1/2/03
APT & RPS2 Project Management	742 days	Fri 2/25/00	Mon 12/30/02



APST Schedule  
Updated March 26, 2001